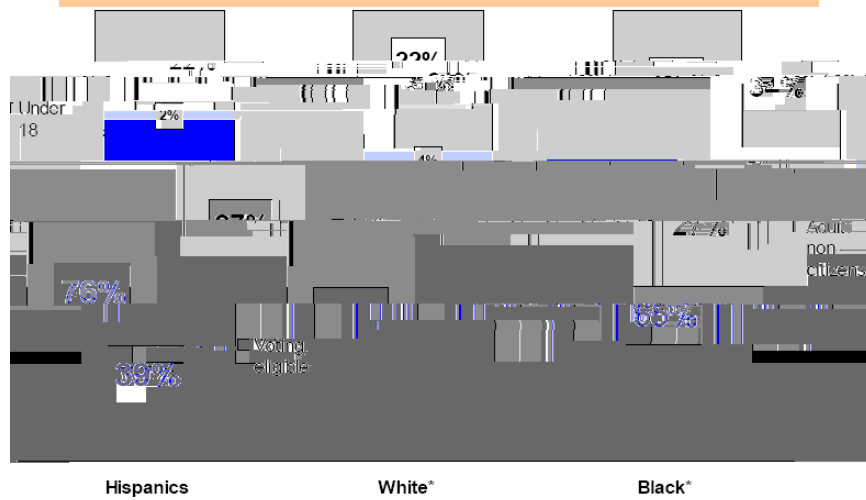


Hispanic Population and Electorate 2000 and 2004

| | 2004 | 2000 | Increase 2000 to 2004 | | |
|--------------------------------------|------------|------------|-----------------------|-------|------|
| | | | Population | Share | Rate |
| Total | 41,300,000 | 35,560,000 | 5,740,000 | 100% | 16% |
| Non-citizens age 18 and above | 11,041,000 | 9,176,000 | 1,866,000 | 33% | 20% |
| Eligible Voters | 16,088,000 | 13,940,000 | 2,148,000 | 37% | 15% |



Eligible Voters as a Share of Total Population for Major Racial/Ethnic Groups 2004

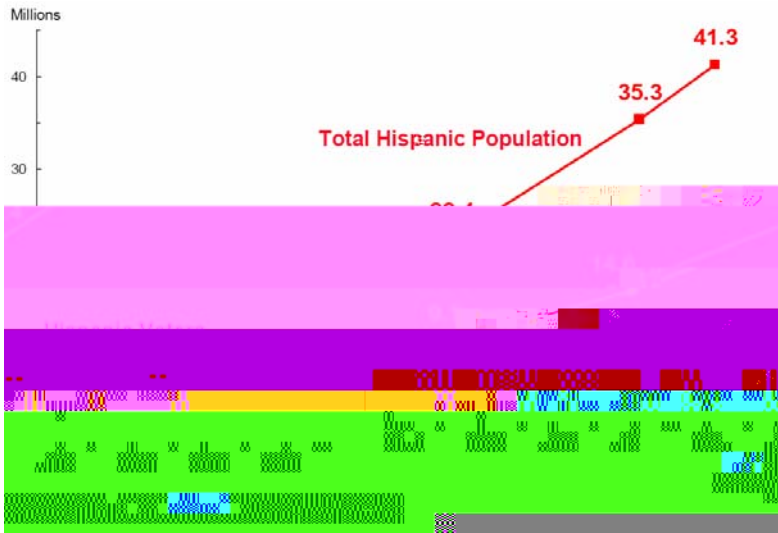


Source: Pew Hispanic Center tabulations of 2004 November Current Population Survey.

* Non-Hispanic

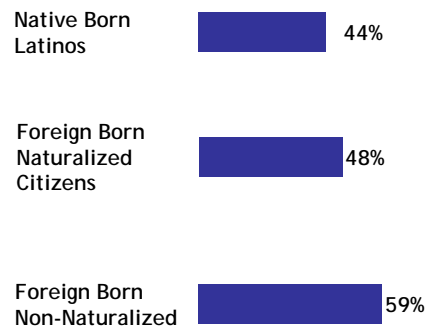


The Growing Divergence between the Total Hispanic Population and the Number of Hispanic Voters 1970-2004

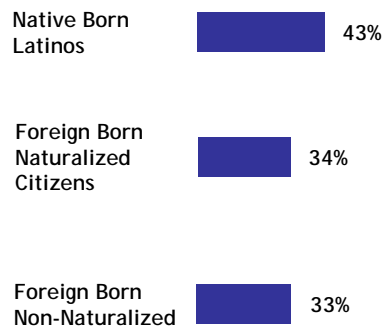


Discrimination

Percent of Latinos who say that discrimination is a MAJOR PROBLEM...

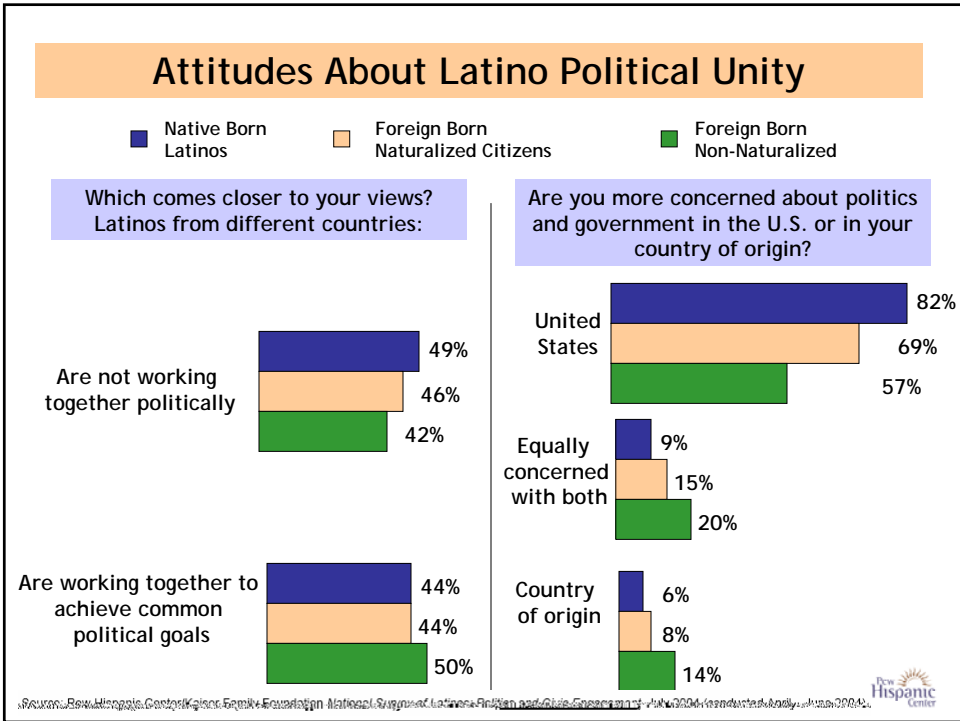
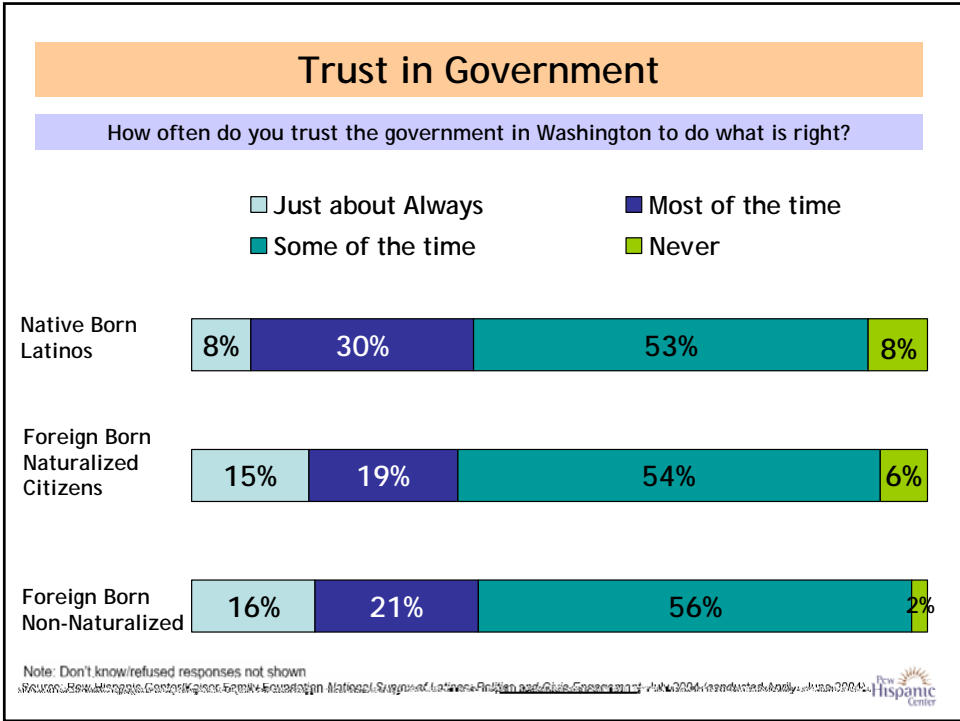


Percent of Latinos who say that in the past 5 years they or a family member has EXPERIENCED DISCRIMINATION...



Source: Pew Hispanic Center, Kaiser Family Foundation, National Survey of Latinos and U.S. Government, 2004. Conducted July 1-14, 2004.

New Hispanic Center



Reported Civic Participation

Percent of Latinos who say that they have...

| | Native Born Latinos | Foreign Born Naturalized Citizens | Foreign Born Non-Naturalized |
|---|------------------------|--------------------------------------|---------------------------------|
| Attended a public meeting/ demonstration in the community where they live | 24% | 15% | 14% |
| Contacted an elected official | 19% | 14% | 4% |
| Contributed money to a candidate running for public office | 14% | 8% | 2% |
| Attended a political party meeting/function | 15% | 10% | 3% |
| Worked as a volunteer/for pay for a political candidate | 7% | 3% | 2% |
| Percent who say they have done any of the above activities | 41% | 26% | 18% |

Source: Pew Hispanic Center, Kaiser Family Foundation, National Survey of Latinos and U.S. Citizenship, 2004. Conducted July 1-15, 2004.



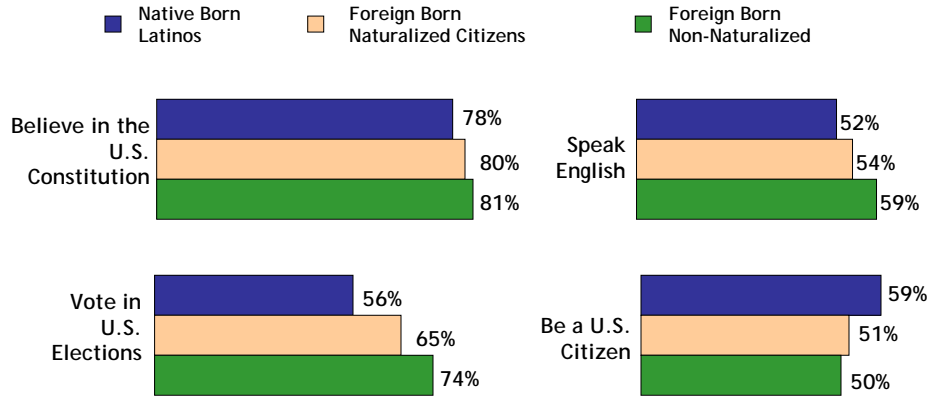
Reported Volunteer Activity

Is it Important the Volunteer Activity Address Latino Concerns?

Of the Latinos who say they engaged in volunteer activity in the past year: In deciding whether to

Perceptions of What an Immigrant Must Do to Say They are a Part of American Society

The percent of Latinos who say an immigrant has to do each of the following to say they are a part of American society:



Source: Pew Hispanic Center, Kaiser Family Foundation, National Survey of Latinos and U.S. Citizenship, 2004. Conducted July 1-14, 2004.



Reported Role of Ethnicity in Voting

Among registered Latinos: Do you agree or disagree with this statement?

Source: Pew Hispanic Center, Kaiser Family Foundation, National Survey of Latinos and U.S. Citizenship, 2004. Conducted July 1-14, 2004.



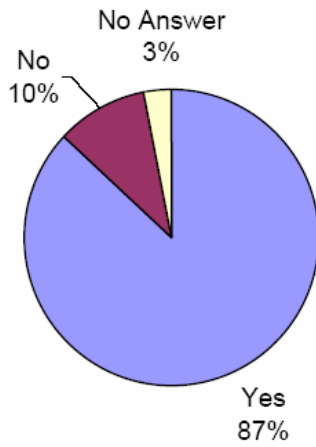
Perceived Role of Ethnicity in Voting

Among registered voting citizens: Do you agree or disagree with this statement?

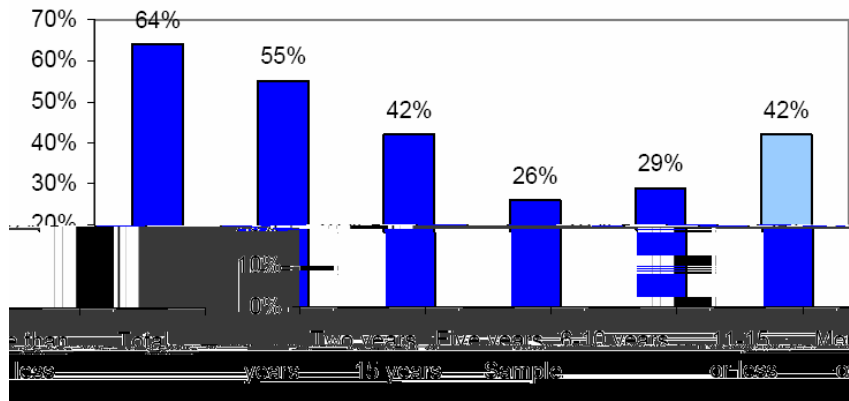
Source: Pew Hispanic Center, U.S. Hispanic Population: Trends and Projections, June 2009. www.pewhispanic.org



Voting in Mexican Elections

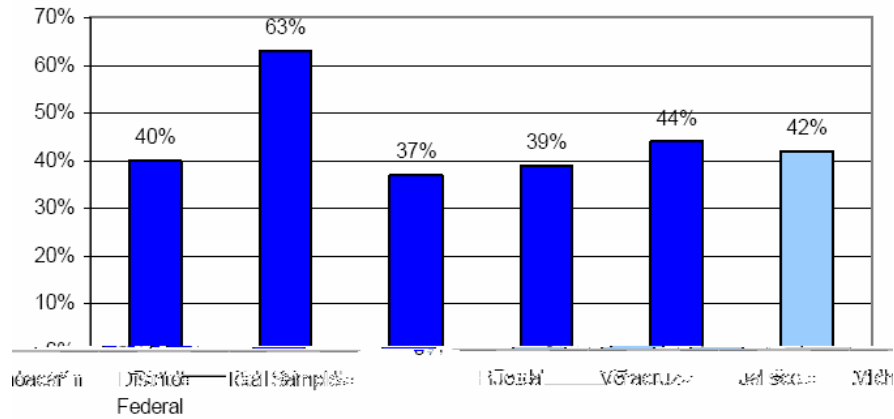


Respondents with Mexican Voting Credentials by Time in the U.S.



Source: Pew Hispanic Center, *Survey of Mexican Migrants, Part One: Attitudes about Immigration and Major Demographic Characteristics*, March 2005.

Respondents with Mexican Voting Credentials by Selected States of Origin



Source: Pew Hispanic Center, *Survey of Mexican Migrants, Part One: Attitudes about Immigration and Major Demographic Characteristics*, March 2005.

Migrants with Mexican Voting Credentials

Did you bring your Mexican voting credential to the U.S.?

| | Yes | No | No Answer |
|-------------|-----|----|-----------|
| Los Angeles | 36 | 62 | 2 |
| New York | 41 | 57 | 2 |
| Dallas | 45 | 50 | 5 |
| Chicago | 45 | 51 | 4 |
| Fresno | 38 | 59 | 3 |
| Raleigh | 51 | 45 | 4 |
| Atlanta | 46 | 50 | 4 |
| TOTAL | 42 | 54 | 4 |

Source: Pew Hispanic Center, *Survey of Mexican Migrants, Part One: Attitudes about Immigration and Major Demographic Characteristics*, March 2005.



Do you belong to a civic organization, sports te

Reported Civic Participation by Mexican Migrants

Do you belong to a civic organization, sports team, or social club of people from Mexico?

Yes No



Earnings per Week

