



Confirmed Cases

7.917



Deaths

92 → 76% over
60 years old



Recovered

2.646

Source:

Chilean Health Ministry 14th April Report
(with information until April 13 at 9:00 pm).

Confirmed Cases and Deaths by Country

	Total cases	Total Deaths	Total Tests	Test per 1M
Argentina	2.443	105	22.805	505
Brazil	25.262	1.532	62.985	296
Chile	7.917	92	87.794	4.593
Colombia	2.979	127	43.053	846
Ecuador	7.603	369	25.347	1.437
Mexico	5.014	332	37.395	290
Peru	10.303	230	102.216	3.100
United States	613.886	26.047	3.065.019	9.260
Uruguay	492	8	9.929	2.858

Source:

<https://www.worldometers.info/coronavirus/>

USD 17 billion

in order to protect families, workers and companies, especially small and medium sized businesses.

USD 2 billion

to protect around 2.6 million workers who are not part of the formal labor market. This includes the direct transfer of social benefits and the creation of emergency jobs.

USD 10.5 million

to help 181 nursing homes and

Social policy measures being implemented

COVID-19 Subsidy Bond



Description:

Monetary payment more than 1.5 million beneficiaries who are part of the most vulnerable families according to their socioeconomic qualification. This requires a government investment of USD 130 million.

Beneficiaries:

- People who receive the Family Subsidy, part of the population with socioeconomic qualification who are not in conditions to support themselves and their families.
- : Ua]Yg VYcb[]b[lc Í GYW f]hYg UbX Cddcfhi b]hYgî GcVU Dfc[fUa .
- Households part of the most vulnerable 60% according to their socioeconomic qualification, without formal incomes and any of the aforementioned subsidies.

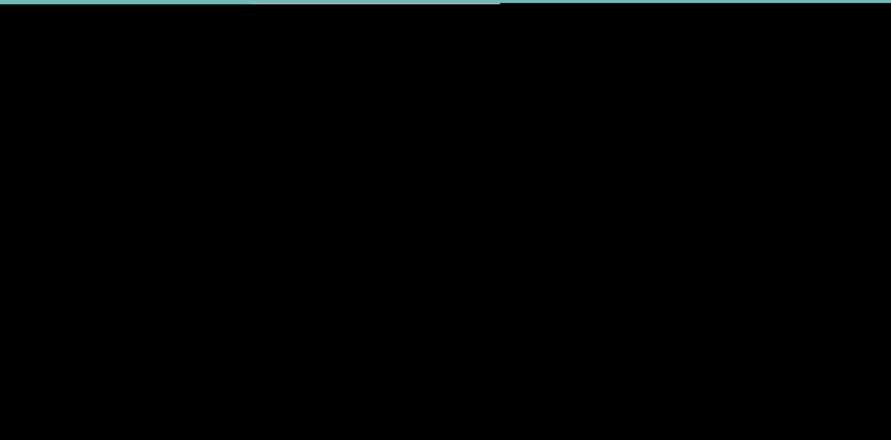


Amount:

The amount given to each dependent family member is USD60*.

*

This is a onetime subsidy, but a second subsidy has not been ruled out in case the economic and public crisis worsens.





Social policy measures being implemented

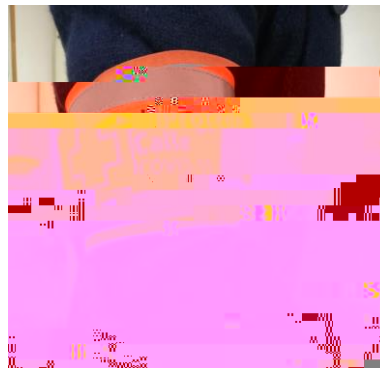
Specific measures for vulnerable groups:

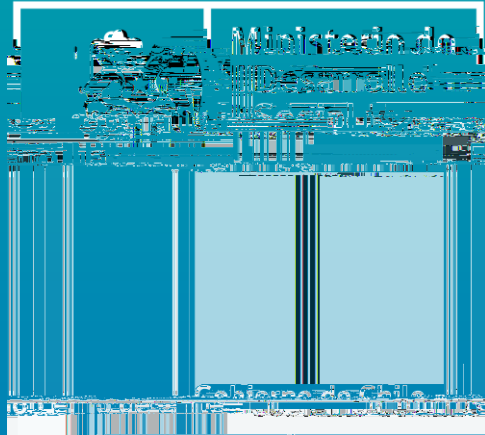
Homeless people



Emergency COVID-19 Action Plan: Immediate Measures

- Protocols for the adequate management of the sanitary situation in shelters.
- Influenza vaccination.
- Creation of an inter-sectorial Advisory Committee.
- Bring forward the beginning of the Winter Program from May 15th to mid-April.
- Installation of 182 24/7 shelters (3.325 beds to protect primarily the elderly and the chronically ill homeless population).
- 80 routes will be created for 4.000 people with 1000 beds and 1000 medical routes.
- Up to 20 people per shelter to accomplish social distancing.
- 10 medical routes.





Webcast

COVID-19 in Latin America: Role of Social Policy

Measures taken by the Chilean
government in the COVID-19 crisis